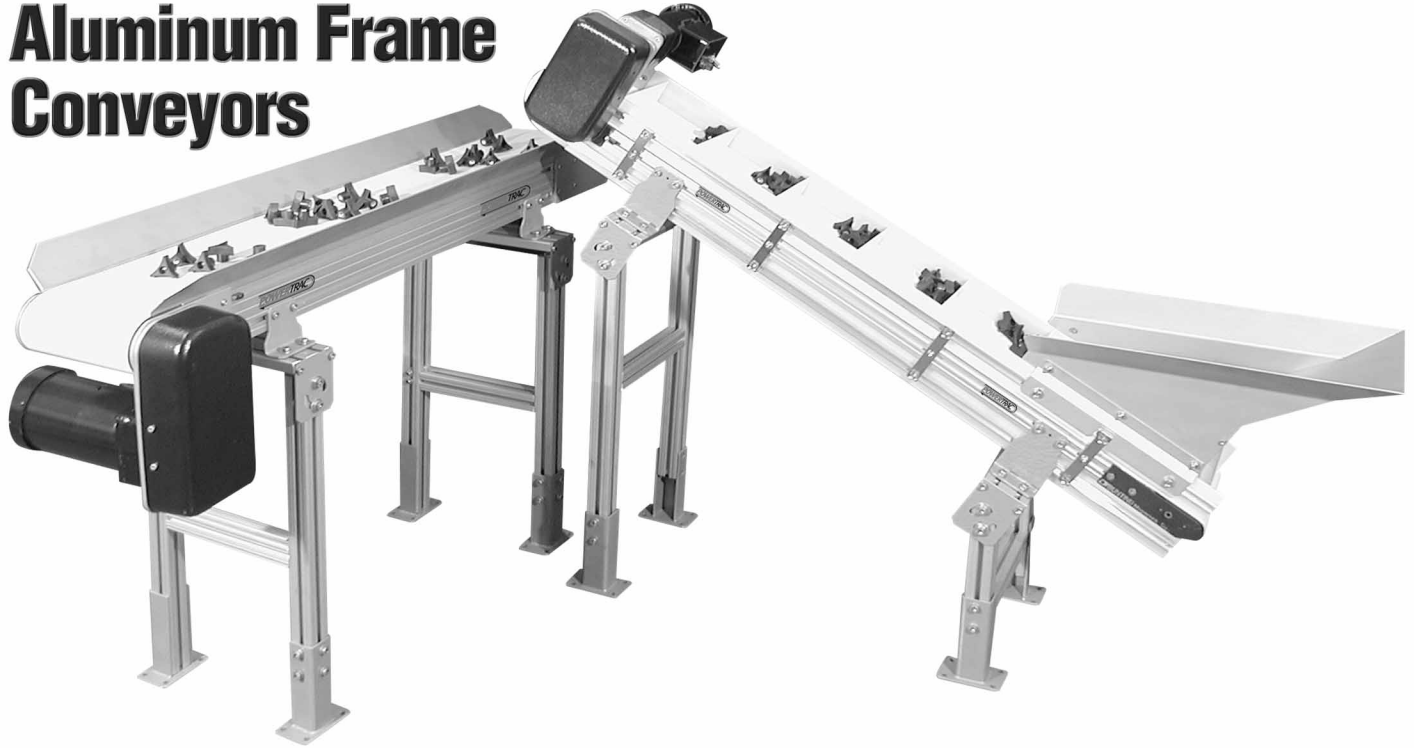


PowerTrac[®] Aluminum Frame Conveyors



Selection Guide



POWERTRAC[®]

PowerTrac® Aluminum Frame Conveyors Selection Guide

This guide is to be used as a supplement to the PowerTrac catalog. It provides selection aids and additional technical information to help you configure the best possible conveyor for your application. Selection is easy using the step-by-step process that follows. For even faster and simpler selection, use our online “Conveyor Configuration Guide” at the PowerTrac web page at www.buntingmagnetics.com. When you need magnetic conveying or when the “standard package” doesn’t meet your needs, call your local Bunting sales representative or Bunting Technical Services at **1-800-835-2526** for expert assistance in designing the right custom solution.



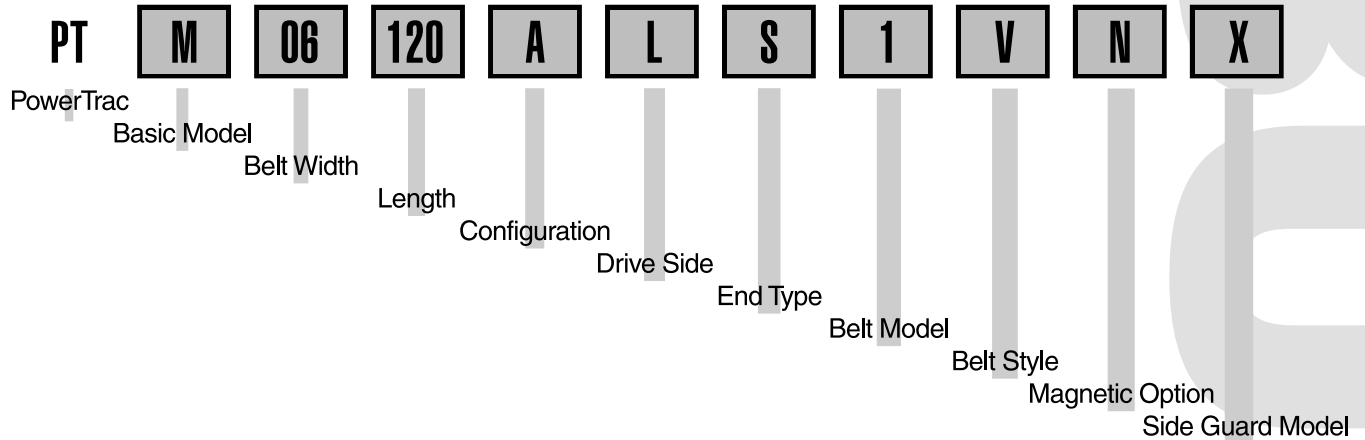
PowerTrac conveyors and accessories use a model number system that fully describes the features of your standard conveyor, greatly simplifying ordering and obtaining service. This guide will assist you in creating the part numbers for the conveyor that will satisfy your application. On the last page of this guide, you will find a reproducible quote request form that can be mailed or faxed to obtain a formal quote on the conveyors you have selected. As you read through this guide, fill in the boxes on the RFQ form to create the model numbers you have configured.

Note:

- Page numbers in parentheses refer to pages in the PowerTrac catalog unless otherwise noted.
- Dimensions are given in the format “inches (mm)” unless otherwise noted. **Use only inch units in specifying model numbers.**

PowerTrac® Conveyor

The nomenclature for the Conveyor Model Number is described below.



Basic Model – Select the conveyor model you need based on the following criteria.

- L** – Low-Profile (pg. 6) is ideal for low clearance, light loads, narrow widths, and light duty applications. Maximum load capacity is up to 150 lbs for end drive models and up to 400 lbs for center drive models.
- M** – Medium-Profile (pg. 7) is the workhorse for magnetic and heavier loads, wider and longer conveyors, and heavier duty applications. Maximum load capacity is up to 400 lbs for end drives and up to 400 lbs for center drives.
- H** – Hybrid (pg. 8) combines the low clearance of the Low-Profile with the drive power of the Medium-Profile. It is ideal for magnetic and heavier loads up to 400 lbs when a center drive is not practical. The Hybrid is not available with cleated belts or center drives.

Belt Width – **06** Enter inch width in two digits, i.e. “06” for 6”.

Select the width that is adequate to convey your part. Standard belt widths, frame widths, and stock component widths are shown below. Take note that price and delivery are substantially better for “stock widths”.

Basic Model	Standard Widths	Stock Widths (in.)
L - low-profile	2-24" in 1" incr.	2,4,6,8,12
M - medium-profile	4-36" in 1" incr.	4,6,8,12
H - hybrid	2-24" in 1" incr.	2,4,6,8,12

Note that belt widths are less than stated model widths for all models less than 6 inches wide.

Model Width (in.)	Belt Width (in.)	Frame Width (in.)
02	1.75 (44 mm)	2 (51 mm)
03	2.75 (70 mm)	3 (76 mm)
04	3.75 (95 mm)	4 (102 mm)
05	4.75 (121 mm)	5 (127 mm)
06 and above	= model width	= model width +.25" (6.3 mm)

Belt Length – Enter inch length in three digits, i.e. "096" for 96".

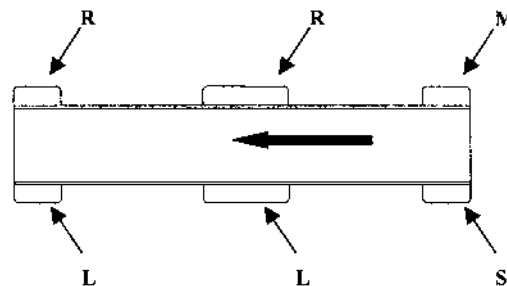
PowerTrac belts are sized so that when tensioned, the conveyor length is the distance from the end of the infeed pulley to the end of the discharge pulley. Add twice the belt thickness (pg. 12) to the length to find the overall length. Actual conveyor length may vary slightly due to the belt tolerance and degree of tensioning. Conveyors over 120" long will be supplied with joiners and broken down into 10' lengths or less to reduce shipping costs unless otherwise specified. For lengths other than standard 1" increments specify in the part name and specify actual lengths in 3 decimal places in a separate note (i.e. note: special length=69.375").

Configuration – Select from the choices below.

- A** – End Drive (pg. 6, 7, 8) is the standard conveyor configuration for low, medium and hybrid conveyors. It is simpler and more economical than the center drive and is preferred unless ruled out because of space restrictions or load requirements.
- B** – Center Drive (pg. 8) provides maximum drive power and unobstructed access to both ends of the conveyor for easier part transfer. The nose bar options (see "End Type") in conjunction with the center drive allow transfer of small parts at either end of the conveyor.
- C** – Cleated Conveyor (pg. 9) is similar to the end drive but includes top side guards for part containment and bottom skirts for belt support and cleat protection. The cleat height and spacing is specified in the belt model explained later. Custom infeed hoppers are available upon request. If you need a cleated belt but not the side guard package, specify configuration **A** and specify a special belt.
- Z** – Custom-Special configurations include conveyors with noseovers, magnetic curves, magnetic corner pulleys, or any other special feature that makes it a non-standard "special" conveyor. Describe your conveyor as much as possible using the model number and submit a sketch and description of your special requirements along with the RFQ form to obtain a quote. A Bunting Sales or Technical Services Representative is an excellent resource to assist you in designing a custom solution for your application.

Drive Side – Select drive shaft location using the diagram. "Standard" direction is with belt running toward drive end. Center drives are "Standard" direction only. "Reverse" direction is with belt running away from drive end. Drive locations "M" and "S" have load capacities reduced by 50% or more.

- L** – Left Hand Standard (end or center drive)
- M** – Left Hand Reverse
- R** – Right Hand Standard (end or center drive)
- S** – Right Hand Reverse



End Type – Select either standard end rollers or nose end rollers for improved part transfer.

- S** – Standard infeed rollers (pg. 6, 7) are 1.38" dia. for Low and Hybrid Models and 3.50" dia. for Medium Models.
- N** – Nose bar infeed rollers (pg. 6, 7) are .38" dia. for Low and Hybrid Models and 1.38" dia. for Medium Models.
- D** – Dual Nose bar rollers (pg. 8) are an option for center drive conveyors only. They provide .38" dia. end rollers for Low Models and 1.38" dia. rollers for Medium Models at both ends of the conveyor.

Belt Model – Select an appropriate belt model number for your application from catalog page 12, noting requirements such as temperature, texture, FDA, and anti-static properties. For cleated conveyors (pg. 9), specify a belt model letter from the chart below which provides the cleat height and spacing you require. The cleated belt is smooth white urethane with cleats indented to run between the side rails. For special belts, enter model and specify your requirements.

Cleat Centers	Cleat Height		
	0.79" (20mm)	1.38" (35mm)	1.97" (50mm)
3	A	G	N
6	B	H	P
9	C	J	Q
12	D	K	R
18	E	L	S
24	F	M	T

Belt Style – All conveyors – with the exception of Low-Profile or Hybrid models equipped with nose rollers – can be ordered with belts having a V-guide on the bottom of the belt. The V-guide tracks the belt with little or no adjustment and prolongs belt life by eliminating edge wear, all at a minimal cost. All standard conveyors are provided with V-guide grooves in the sliderbeds and pulleys; this allows replacement of a flat belt with a V-guided belt whenever desired.

– V-guided urethane profile on bottom of belt.

– Flat bottom belt with tracking adjustments at both ends of conveyor.

Magnetic Option – Many possible magnetic options are available (pg. 9) to match the requirements of the application. Consult your sales representative or submit sample parts to determine which magnetic option is right for the job. The “ML” and the “MM” are the only standard options available on Low-Profile or Hybrid models. Magnetic options are limited for conveyors narrower than 6". Decreasing force ends are used to help release parts from the conveyor’s magnetic field.

– Nonmagnetic

– Single lane “ML” magnetic light duty with full force at infeed and decreasing force at discharge.

– Single lane “ML” magnetic light duty with decreasing force at infeed and discharge.

– Single lane “MM” magnetic medium duty with full force at infeed and decreasing force at discharge.

– Single lane “MM” magnetic medium duty with decreasing force at infeed and discharge.

– Single lane “MH” magnetic heavy duty with full force at infeed and decreasing force at discharge.

– Single lane “MH” magnetic heavy duty with decreasing force at infeed and discharge.

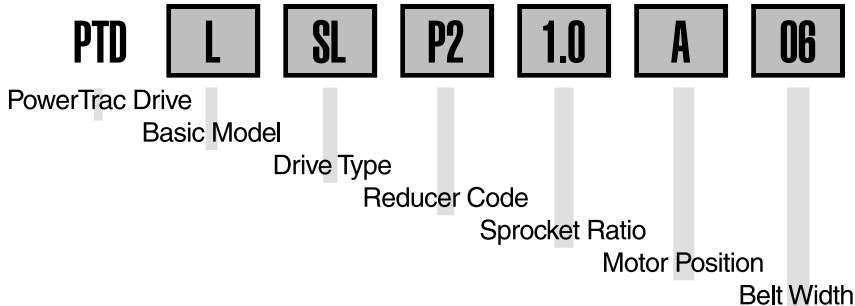
– Custom-engineered to suit.

Side Guard Type – Select from the side guard options shown on page 13. Model , “flush top”, allows side guard retrofit with any 0.125" thick material in the provided frame recess. Request option #PTZ20 for side guard attachment hardware. For custom side guards specify model , and provide a sketch of the desired features.

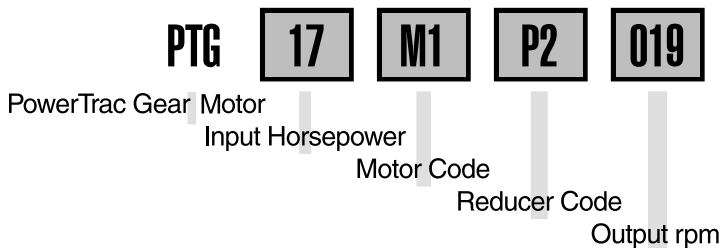
Drive Package and Gear Motor Selection

Selection of the Drive Package and the Gear Motor must be done simultaneously to match speed and torque requirements as well as address space constraints. Page 10 of the PowerTrac Catalog provides Drive Package selection hints. Page 11 gives an overview of Gear Motor types. The nomenclature for the Drive Package and Gear Motor Model Numbers is explained below.

PowerTrac® Drive Package



PowerTrac Gear Motor



Follow the steps below to select a drive system to match your requirements.

Step 1 – Estimate required belt speed. If you know your target belt speed, proceed to step 2. To estimate belt speed for bulk or spaced conveying, use one of the formulas below.

Bulk _____ Belt speed (ft/min) = parts/min ÷ parts/lineal ft

Spaced _____ Belt speed (ft/min) = parts/min X part spacing, center to center (in.) ÷ 12

Step 2 – Calculate torque requirements. Use the formula below to calculate the conveyor torque requirements for horizontal, nonmagnetic, and non-accumulation applications. For all other applications consult Bunting Technical Services for drive selection assistance.

Calculate Total Load (The maximum weight of all parts on the conveyor at any one time.)

_____ Total Load (lbs) = parts per minute X weight/part (lbs) X conveyor length (ft) ÷ Belt Speed (ft/min)

_____ Required Torque (in-lb) = (Belt Width X 1.5 lbs/in. + 7 lbs + Total Load X .30) X Pulley Dia.** X .62

+ _____ + 15 in-lb for “L” model belt wipers or transfer plates

+ _____ + 20 in-lb for “H” model or center drive conveyors

+ _____ + 20 in-lb for “L” model nose bars (+ 40 in-lb for dual end “L” model)

= _____ in-lb **Total Required Torque**

**Pulley Diameter is 1.375" for “L” model end drives and 3.500" for all other configurations.

Step 3 – Select a Drive Type. See page 10 of the catalog for selection pointers on available end drive options. Select from the drive type and drive side choices below, noting availability on Basic Models. The drive side (L, R) should correspond to the conveyor model number – refer to column 3. For dimensions, refer to the drawings indicated on pages 10 and 11 of this selection guide.

Code	Type	Side	For Models	Refer to Figure #
BL	Bottom End	Left (L or M)	L, M, H	1
BR	Bottom End	Right (R or S)	L, M, H	1
FL	Flush End	Left (L or M)	L	1
FR	Flush End	Right (R or S)	L	1
TL	Top End	Left (L or M)	L, M, H	2
TR	Top End	Right (R or S)	L, M, H	2
SL	Side End	Left (L or M)	L, M	3 for “L”, 4 for “M”
SR	Side End	Right (R or S)	L, M	3 for “L”, 4 for “M”
CL	Center	Left (L)	L, M	5 and 6
CR	Center	Right (R)	L, M	5 and 6
OZ	Custom drive - specify			

Step 4 – Check available torque of Drive Type. The chart below shows maximum torque that can be transmitted by various Drive Types and Sprocket Ratios. If available torque doesn't exceed Total Required Torque from Step 2, select a different Basic Model or different Drive Type.

Drive Type	“L” Model End Drives			“L” Model Flush Drive	All Other Sprocket Drives			All Side Drives
Sprocket Ratio	1.0	1.5	2.0	All	0.8	1.0	1.2	(1.0)
Max. Torque in-lb	84	63	50	38	182	213	182	194

Step 5 – Select Gear Motor output rpm. Use Table 1 below to find the belt speed available at selected output rpm's and sprocket ratios. Be sure that the sprocket ratio of the selected speed provides sufficient torque as shown in Step 4. For other rpm's use the following formula to calculate belt speed.

$$\text{Belt Speed (FPM)} = \text{RPM} \times \text{Sprocket Ratio} \times \text{Pulley Diameter}^{**} (\text{in.}) \times .262$$

** Pulley Diameter is 1.375" for “L” model end drives and 3.500" for all other configurations.

Table 1 – Belt Speeds (feet per minute)

Basic Model(s)	Drive Type(s)	Sprocket Ratios	Gear Motor Output RPM								
			29	44	60	88	125	175	250	350	500
L	Top	1.0	10	16	22	32	45	63	90	126	180
	Bottom	1.5	16	24	32	48	68	95	135	189	270
	Side (1.0)	2.0	21	32	43	63	90	126	180	252	360
L	Flush	1.9	20	30	41	59	84	118	169	236	338
	Bottom	2.3	24	36	49	71	101	142	203	284	405
		2.5	26	40	54	79	113	158	225	315	450
M H (L-center)	Top	0.8	21	32	44	65	92	128	183	257	367
	Bottom	1.0	27	40	55	81	115	160	229	321	459
	Center Side (1.0)	1.2	33	50	69	101	143	201	287	401	573

Step 6 – Adjust “Total Required Torque”. After selecting a belt speed, return to Step 2 and recalculate the “Total Load” and the “Total Required Torque” using the actual belt speed selected in Step 5.

Step 7 – Select a Gear Motor from Table 2 taking into consideration the following variables: Motor Code, Reducer Code, Output RPM, and Output Torque. The output torque of the gear motor must be divided by the sprocket ratio to find the output torque at the conveyor drive shaft.

Conveyor Torque (in-lb) = Gear Motor Torque ÷ Sprocket Ratio

Be sure to select a gear motor that will provide a Conveyor Torque greater than the Total Required Torque calculated in Step 2.

Reducer Code – [P2] Catalog page 11 details the 3 parallel (P1, P2, P3) and 1 right angle (R1) gear motor types available for all PowerTrac® conveyors. Figures 1-6 and dimensional charts show which gear motors can be used on different drive types.

Motor Code – [M1] Catalog page 11 lists the 6 available motor codes and the available control options for each. The motor codes are:

Motor Code	M1	M2	M3	M4	M5	M6
Power Source	115V, 1ph, 60Hz	115/230V, 1ph, 60Hz	230/460V, 3ph, 60Hz	90VDC perm. magnet	180VDC perm. magnet	100 psi air

If you need a gear motor other than those listed specify M0 and specify your requirements.

Table 2 – Gear Motor Selection (sorted by output rpm)

Gear Motor Part Number	Input HP	Motor Code	Reduc. Code	Output RPM	Output Torque	Gear Motor Part Number	Input HP	Motor Code	Reduc. Code	Output RPM	Output Torque
PTG17M4R1029	.17	M4	R1	29	223	PTG13M4P2170	.13	M4	P2	170	43
PTG25M2R1029	.25	M2	R1	29	327	PTG33M2P3173	.33	M2	P3	173	109
PTG25M3R1029	.25	M3	R1	29	327	PTG33M3P3173	.33	M3	P3	173	109
PTG25M4R1029	.25	M4	R1	29	327	PTG17M4R1175	.17	M4	R1	175	54
PTG33M2R1029	.33	M2	R1	29	432	PTG25M2R1175	.25	M2	R1	175	79
PTG33M3R1029	.33	M3	R1	29	432	PTG25M3R1175	.25	M3	R1	175	79
PTG33M4R1029	.33	M4	R1	29	432	PTG25M4R1175	.25	M4	R1	175	79
PTG17M2P2040	.17	M2	P2	40	219	PTG33M2R1175	.33	M2	R1	175	105
PTG17M4R1044	.17	M4	R1	44	164	PTG33M3R1175	.33	M3	R1	175	105
PTG25M2R1044	.25	M2	R1	44	241	PTG33M4R1175	.33	M4	R1	175	105
PTG25M3R1044	.25	M3	R1	44	241	PTG50M2R1175	.50	M2	R1	175	158
PTG25M4R1044	.25	M4	R1	44	241	PTG50M3R1175	.50	M3	R1	175	158
PTG33M2R1044	.33	M2	R1	44	319	PTG50M4R1175	.50	M4	R1	175	158
PTG33M3R1044	.33	M3	R1	44	319	PTG75M6R1175	.75	M6	R1	175	238
PTG33M4R1044	.33	M4	R1	44	319	PTG17M4R1250	.17	M4	R1	250	38
PTG07M1P1057	.07	M1	P1	57	56	PTG25M2R1250	.25	M2	R1	250	56
PTG06M4P1060	.06	M4	P1	60	56	PTG25M3R1250	.25	M3	R1	250	56
PTG25M4P3062	.25	M4	P3	62	220	PTG25M4R1250	.25	M4	R1	250	56
PTG33M2P3085	.33	M2	P3	85	218	PTG33M2R1250	.33	M2	R1	250	74
PTG33M3P3085	.33	M3	P3	85	218	PTG33M3R1250	.33	M3	R1	250	74
PTG17M4R1088	.17	M4	R1	88	98	PTG33M4R1250	.33	M4	R1	250	74
PTG25M2R1088	.25	M2	R1	88	144	PTG50M2R1250	.50	M2	R1	250	112
PTG25M3R1088	.25	M3	R1	88	144	PTG50M3R1250	.50	M3	R1	250	112
PTG25M4R1088	.25	M4	R1	88	144	PTG50M4R1250	.50	M4	R1	250	112
PTG33M2R1088	.33	M2	R1	88	190	PTG50M5R1250	.50	M5	R1	250	111
PTG33M3R1088	.33	M3	R1	88	190	PTG75M6R1250	.75	M6	R1	250	168
PTG33M4R1088	.33	M4	R1	88	190	PTG25M4P3250	.25	M4	P3	250	45
PTG50M2R1088	.50	M2	R1	88	288	PTG33M2P3345	.33	M2	P3	345	55
PTG50M3R1088	.50	M3	R1	88	288	PTG33M3P3345	.33	M3	P3	345	55
PTG50M4R1088	.50	M4	R1	88	288	PTG50M2R1350	.50	M2	R1	350	79
PTG17M2P2090	.17	M2	P2	90	103	PTG50M3R1350	.50	M3	R1	350	79
PTG50M5R1125	.50	M5	R1	125	202	PTG50M4R1357	.50	M4	R1	357	79
PTG25M4P3125	.25	M4	P3	125	100	PTG50M5R1357	.50	M5	R1	357	79
PTG17M2P2156	.17	M2	P2	156	60	PTG50M2R1500	.50	M2	R1	500	56
PTG17M3P2156	.17	M3	P2	156	60	PTG50M3R1500	.50	M3	R1	500	56

Step 8 – Complete the Drive Package part number by selecting from the following items.

Basic Model

L – For Low-Profile end drive models only.

M – For all Medium-Profile and Hybrid models and all center drive conveyors.

Sprocket Ratio – **1.0** All top, bottom and center drives have three sprocket ratios available, each providing a range of speeds for a given gear motor. Side drives are direct driven and use a 1.0 ratio for calculation purposes. Refer back to Table 1, “Belt Speeds,” to find the ratio that provides the proper belt speed.

Motor Position – **A** Gear motors can be rotated in 90° increments to increase clearance or to reposition the junction box. See Figures 1-6 for available right angle gear motor positions. “A” is the default position for all gear motors.

Belt Width – **06** Required only on “L” model side drives and “L” model top and bottom drives with “P3” reducer code.

Drive Dimensions

Refer to the following charts for gear motor dimensions on Figures 1-6. The first chart is for parallel type (P) gear motors and the second chart is for the motor portion of a right angle (R1) gear motor.

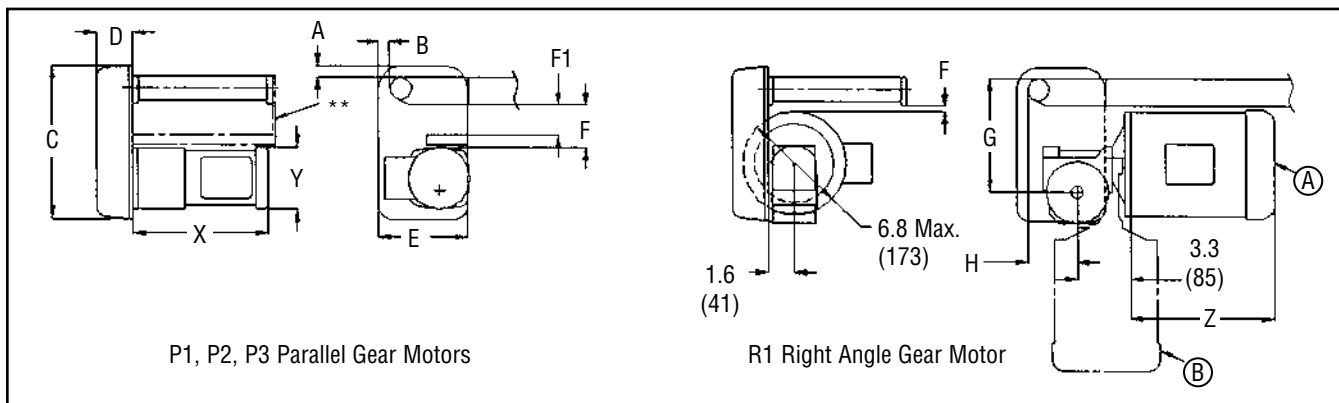
Parallel Gear Motor Dimensions

Reducer Code	Motor Code	Power Source	HP	X	Y
P1	M1	115V, 1ph, 60Hz	.07	8.1" (206)	3.9" (99)
P1	M4	90VDC	.06	6.6" (168)	3.8" (97)
P2	M2 and M3	115/230V, 230/460V	.17	10.4" (264)	4.8" (123)
P2	M4	90VDC	.13	10.0" (254)	4.8" (123)
P3	M2 and M3	115/230V, 230/460V	.33	11.8" (300)	5.0" (127)
P3	M4	90VDC	.25	11.3" (287)	5.0" (127)

Right Angle/56C-Face Motor Dimensions

Motor Code	Power Source	HP	Z
M2	115/230V, 1ph, 60Hz	.25 to .50	8.9" (226)
M3	230/460V, 3ph, 60Hz	.25	7.9" (201)
M3	230/460V, 3ph, 60Hz	.33 and .50	8.9" (226)
M4	90VDC	.17	6.9" (175)
M4	90VDC	.25	8.6" (218)
M4	90VDC	.33	9.4" (239)
M4, M5	90VDC, 180VDC	.5	9.8" (249)
M6	100 psi air	.75	4.5" (114)

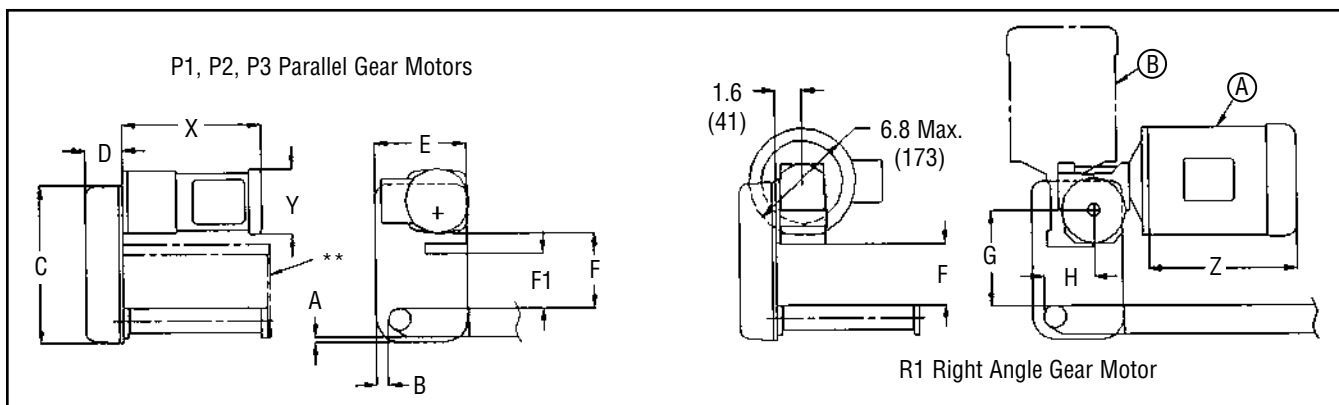
Figure 1 – Bottom Drive (right hand shown)



** support brace used on "LP" P3 only

	A	B	C	D	E	F (P1)	F (P2)	F (P3)	F (R1)	G	H	F1 (P3)
Standard Low-Profile	.75 (19)	.62 (16)	9.50 (241)	2.25 (57)	5.50 (140)	2.66 (68)	1.84 (47)	3.66 (93)	.34 (9)	7.09 (180)	3.12 (79)	2.90 (74)
"Flush" Low-Profile	0	0	9.50 (241)	2.00 (51)	4.88 (124)	2.63 (67)	1.82 (46)	–	.32 (8)	7.19 (183)	2.50 (64)	–
Medium-Profile	0	0	11.31 (287)	3.00 (76)	5.62 (143)	–	2.16 (55)	2.18 (55)	.66 (17)	7.78 (198)	2.09 (53)	–

Figure 2 – Top Drive (right hand shown)



** support brace used on "LP" P3 only

	A	B	C	D	E	F (P1)	F (P2)	F (P3)	F (R1)	G	H	F1 (P3)
Standard Low-Profile	.34 (9)	1.00 (25)	9.50 (241)	2.25 (57)	5.50 (140)	4.47 (114)	3.66 (93)	3.98 (101)	3.73 (95)	5.67 (144)	2.75 (70)	3.21 (82)
Medium-Profile	0	0	11.31 (287)	3.00 (76)	5.62 (143)	–	3.97 (101)	4.29 (109)	4.04 (103)	7.78 (198)	2.09 (53)	–

Figure 3 – Low-Profile Side Drive (right hand shown)

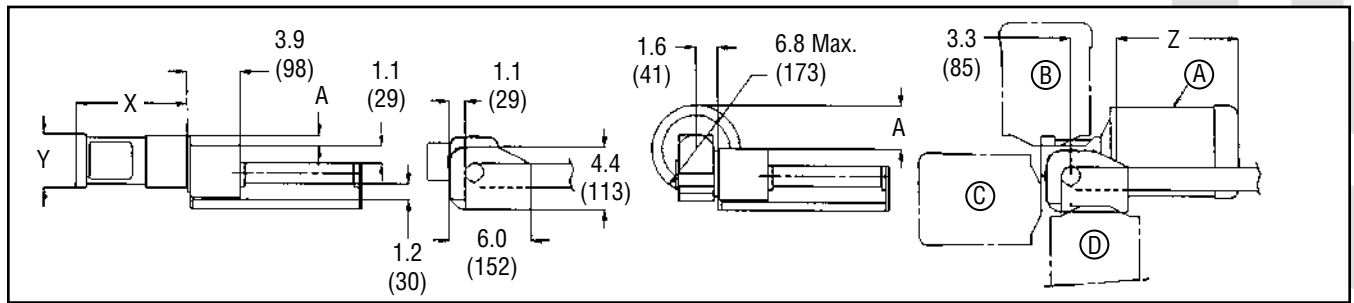
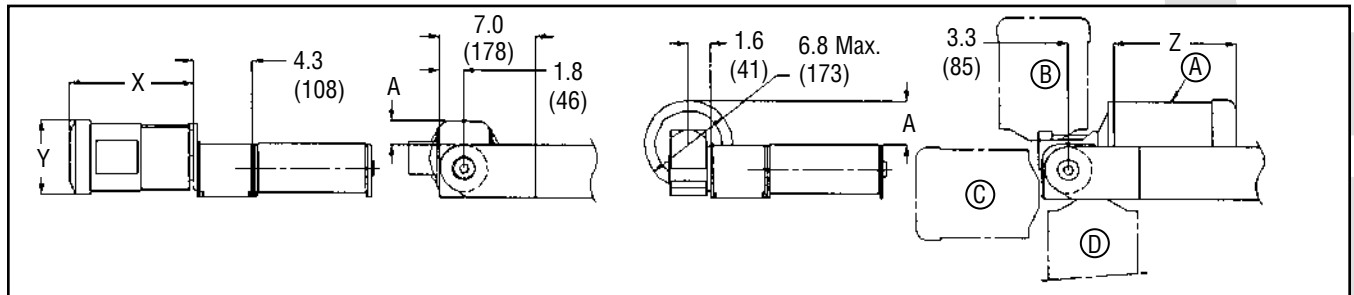


Figure 4 – Medium-Profile Side Drive (right hand shown)



	A (P1)	A (P2)	A (P3)	A (R1)
Low-Profile	.94 (24)	1.75 (44)	1.73 (44)	3.24 (83)
Medium-Profile	–	1.81 (46)	1.79 (45)	3.37 (86)

Figure 5 – Center Drive-Right Angle Gear Motor (left hand shown)

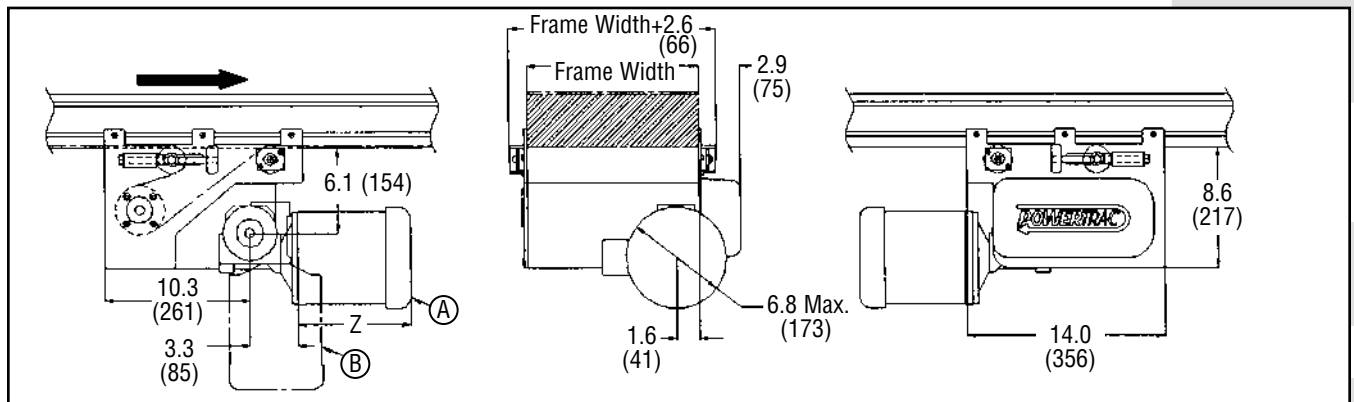
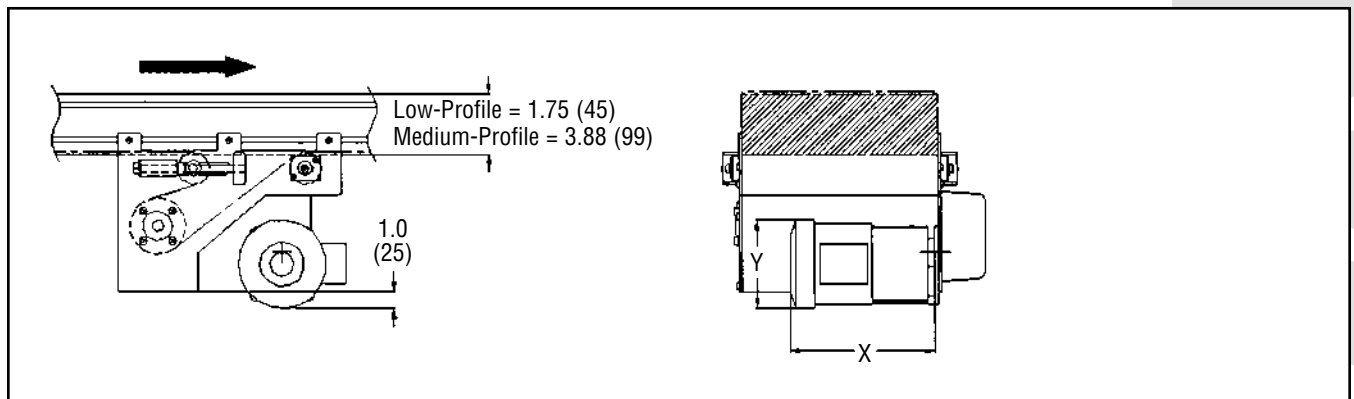


Figure 6 – Center Drive-Parallel Gear Motor (left hand shown)



Control Selection

The nomenclature for PowerTrac® Control model numbers is explained below.

PowerTrac Control

PTE **C** **E3** **25**

PowerTrac Control
Control Type
Electrical Code
Input Horsepower

Control Type – **C** Select from one of the control options shown on page 11 of the catalog. Use the “Input Power Types” chart on page 11 to select a control option that is compatible with the Motor Code of the gear motor you have already selected.

Electrical Code – Controls are generally configured for a particular voltage. Specify one of the electrical codes below that matches the control type selected.

Code	Input Voltage
E1	115V, 1ph, 60Hz
E2	230V, 1ph, 60Hz
E3	230V, 3ph, 60Hz
E4	460V, 3ph, 60Hz
EP	Pneumatic 20 - 100 psi air
E0	Custom-specify special voltage requirements

Input Horsepower – **25** Enter the “Input HP” code from the gear motor model number you have selected. (Refer to Table 2 on page 8 of this guide.)

Support Selection

The nomenclature for PowerTrac Support model numbers is explained below.

PowerTrac Support

PTS **A** **12** **36**

PowerTrac Support
Support Type
Support Width
Support Height

Support Type – Select a support type from catalog page 14.

- P** – Pedestal – This type is adjustable to fit conveyors from 2" to 7" wide.
- A** – Aluminum – This is a versatile general-purpose support available for all conveyor widths. The top plate swivels up to 90° for inclines and has T-slots that allow the conveyor to be adjusted laterally as needed. Both swivel (PTZ02) and rigid (PTZ01) casters can be bolted directly to the feet and cross brace kits (PTZ03) can be added for extra rigidity.
- Z** – Custom – When special needs call for welded or mobile bases, inverted conveyors or ceiling hangers, specify a custom support and submit a sketch if necessary.

Support Width – [12] Type A supports are available in 12" (305 mm), 18" (457 mm), 24" (305 mm), 30" (762 mm), and 36" (914 mm) widths. When selecting a width, consider whether the support will be bolted to the floor, on casters, or resting on the floor. Supports that are taller or not bolted to the floor should maintain a height/width ratio of less than 3:1. For Type P supports specify a width between 2" and 7".

Support Height – [36] Specify a support height to the nearest inch increment that will provide the belt height you need. The minimum standard support height with ±2" adjustment is 14" (355 mm) for Type P and 15" (381 mm) for Type A. The cross brace kit (PTZ03) is available on Type A supports 18" or taller. Use the following formulas to determine correct support height.

<u>Conveyor Profile</u>	<u>Formula</u>	<u>If used with Casters</u>
Low and Hybrid	Support height = Belt Height - 0.88" = _____	- 5.125" = _____
Medium	Support height = Belt Height - 3.00" = _____	- 5.125" = _____

Accessories

Select accessories as required on page 15. The nomenclature for PowerTrac® Accessory model numbers is as follows.

PowerTrac Accessories



PowerTrac Accessories
 Accessory Number
 Model Width (Required only on PTZ10 thru PTZ16)

Additional standard options not shown in the catalog include crating and shipping instructions. Except for center drive models, all conveyors and drives will be shipped in separate cartons to reduce crating and shipping costs. The following options provide conveyors fully assembled for fast startup.

PTZ30 – Crated conveyor with drive package assembled.

PTZ31 – Crated conveyor with drive package and supports assembled.

Statement of Responsibility

When conveyors, drives and supports are configured and ordered by the customer, the customer assumes responsibility for the suitability of the equipment for the application. Equipment which has been misapplied or ordered incorrectly is subject to restocking fees as described in the following section. If you have any questions regarding product selection, please contact a Bunting Technical Services Representative.

Returned Merchandise

Full Customer Service: If you are not fully satisfied with our product, we will work with you to achieve your complete satisfaction, and to build a long-term relationship between our companies. This procedure applies to all requests for returned merchandise.

Damaged Freight: Bunting Magnetics Co. is not responsible for damages to our products during the course of transit. If you have a damaged freight claim, please file that claim with your carrier.

RGA Required: Whenever you wish to ship to Bunting any of our products (or any item for evaluation of potential future business), you must call or write to obtain a Return Goods Authorization number. RGA numbers enable Bunting employees to track the product through our system and improve our customer service. However, an RGA number does not guarantee that your credit request will be approved. We will evaluate your credit request on a timely basis, and we will do our best to satisfy your request.

RGA Procedure (General Products):

1. Contact a Bunting representative with your RGA request; he or she will gather the necessary information and will fax a written decision concerning your request within two working days. Call (800) 835-2526 (or fax 316-293-4975) and ask for an Inside Sales Associate.
2. All RGA items must be shipped to Bunting with freight prepaid by the customer. Bunting will not accept freight collect shipments on any RGA or warranty work, unless there is prior written approval by the Technical Service Manager.
3. After an RGA has been issued, it is valid for customer shipment to Bunting for 50 calendar days. Ship returned merchandise to our Newton location. Returned merchandise must be returned in "like new" condition in order for credit requests to be considered. The RGA # should be prominently marked on the returned package.
4. Upon receipt of the returned merchandise, Bunting employees will inspect the merchandise and review the situation surrounding the return. Disposition of the credit request will be decided by Bunting management and communicated to the customer within 10 working days.

Restocking Charges: The following restocking charges will be applied to returned items.

- | | |
|---|----------------------|
| 1. Stock Catalog Items
(off-the-shelf stock) | 30% minimum charge |
| 2. Non-Stock Catalog Items
(not normally carried in stock) | 50% minimum charge |
| 3. Custom Items
(custom fabrication, "built to order",
customer applications – including
catalog stock with modifications) | non-returnable items |

Product Warranty

Bunting Magnetics Co. warrants its equipment to be free of defects in material and workmanship for a period of one year from date of shipment and to conform to specifications and quality as quoted.

Bunting Magnetics Co. shall remedy any such failure in compliance with this warranty by making replacement of said defective parts or, at the seller's option, making repairs or adjustments to any defective parts providing:

1. The purchaser gives Bunting Magnetics Co. prompt written notice of defect, including unit serial number and date of purchase;
2. The purchaser, at his expense, returns the defective part to Bunting Magnetics Co., 500 South Spencer Avenue, Newton, KS, 67114, for inspection and verification of defect; and
3. The purchaser accepts shipment of replacement parts F.O.B. Newton, KS, 67114.

The extent of this warranty shall be limited to the replacement of defective parts. The purchaser shall bear the expense of installation and adjustment of replacement parts unless otherwise agreed to in writing by Bunting Magnetics Co. Replacement of a part under warranty does not extend the warranty term.

This warranty shall not apply if failure of equipment or parts is caused by abuse, improper maintenance or repairs, misapplication, incorrect adjustments, exposure to corrosive or abrasive material, or any modification or alteration affecting the operation of the unit which is not authorized by Bunting Magnetics Co. in writing.

Bunting Magnetics Co. shall not be liable for incidental or consequential damages of any nature caused by any defect in this unit. The total liability shall not, under any circumstances, exceed the purchase price of the products furnished by Bunting Magnetics Co.

Equipment parts or accessories not manufactured by Bunting Magnetics Co. are subject strictly to the warranties, if any, of those respective manufacturers. Such items as motors, reducers, bearings, and belting are covered under this statement.

The foregoing is in lieu of all other warranties, expressed or implied, including any warranty of merchantability or fitness for a particular purpose.

For technical assistance or to order, call
(800) 835-2526
Outside U. S. and Canada 1-316-284-2020
or visit our web site
www.buntingmagnetics.com



500 S. Spencer Avenue • Box 468 • Newton, KS 67114-0468 • USA • 1-316-284-2020 • Fax 1-316-283-4975
E-mail: bmc@buntingmagnetics.com • www.buntingmagnetics.com

Stocking Branch

1150 Howard Street • Elk Grove Village, IL 60007 • USA • 1-847-593-2060 • Fax 1-847-593-2045

PowerTrac® Quote Request Transmittal

Company: _____ QUOTE: _____
 Address: _____ Date Received _____
 _____ Reference #: _____
 Contact: _____ Due Date: _____
 Phone: _____ OEM Distributor Resale
 Fax: _____ Discount: _____% Rep: _____
 Project Reference: _____ Salesperson: _____

Product Description: _____ Application: Parts Scrap Accumulation
 Typ. Dimensions; _____"x_____"x_____", Minimum; _____"x_____"x_____", Maximum; _____"x_____"x_____"
 Max. Weight ___lbs/Min. Weight ___lbs Ferrous (magnetic) Nonferrous Round Square Irregular
 Rate: ___parts/min. Material Cond. Dry Wet Oily Soft Smooth Sticky Abrasive Temp. ___°F
 Sample submitted? yes no Submit additional description, sketches, layouts, or specifications on separate sheets.

Item #	Qty	Component	Model #											
1A	_____	Conveyor	PT	<input type="checkbox"/>	<input type="checkbox"/>	<input type="checkbox"/>	<input type="checkbox"/>	<input type="checkbox"/>	<input type="checkbox"/>	<input type="checkbox"/>	<input type="checkbox"/>	<input type="checkbox"/>	<input type="checkbox"/>	<input type="checkbox"/>
1B	_____	Drive Package	PTD	<input type="checkbox"/>	<input type="checkbox"/>	<input type="checkbox"/>	<input type="checkbox"/>	<input type="checkbox"/>	<input type="checkbox"/>	<input type="checkbox"/>	<input type="checkbox"/>	<input type="checkbox"/>	<input type="checkbox"/>	<input type="checkbox"/>
1C	_____	Gear Motor	PTG	<input type="checkbox"/>	<input type="checkbox"/>	<input type="checkbox"/>	<input type="checkbox"/>	<input type="checkbox"/>	<input type="checkbox"/>	<input type="checkbox"/>	<input type="checkbox"/>	<input type="checkbox"/>	<input type="checkbox"/>	<input type="checkbox"/>
1D	_____	Control	PTE	<input type="checkbox"/>	<input type="checkbox"/>	<input type="checkbox"/>	<input type="checkbox"/>	<input type="checkbox"/>	<input type="checkbox"/>	<input type="checkbox"/>	<input type="checkbox"/>	<input type="checkbox"/>	<input type="checkbox"/>	<input type="checkbox"/>
1E	_____	Support	PTS	<input type="checkbox"/>	<input type="checkbox"/>	<input type="checkbox"/>	<input type="checkbox"/>	<input type="checkbox"/>	<input type="checkbox"/>	<input type="checkbox"/>	<input type="checkbox"/>	<input type="checkbox"/>	<input type="checkbox"/>	<input type="checkbox"/>
1F	_____	Option	PTZ	<input type="checkbox"/>	<input type="checkbox"/>	<input type="checkbox"/>	<input type="checkbox"/>	<input type="checkbox"/>	<input type="checkbox"/>	<input type="checkbox"/>	<input type="checkbox"/>	<input type="checkbox"/>	<input type="checkbox"/>	<input type="checkbox"/>
1G	_____	Option	PTZ	<input type="checkbox"/>	<input type="checkbox"/>	<input type="checkbox"/>	<input type="checkbox"/>	<input type="checkbox"/>	<input type="checkbox"/>	<input type="checkbox"/>	<input type="checkbox"/>	<input type="checkbox"/>	<input type="checkbox"/>	<input type="checkbox"/>
1H	_____	Option	PTZ	<input type="checkbox"/>	<input type="checkbox"/>	<input type="checkbox"/>	<input type="checkbox"/>	<input type="checkbox"/>	<input type="checkbox"/>	<input type="checkbox"/>	<input type="checkbox"/>	<input type="checkbox"/>	<input type="checkbox"/>	<input type="checkbox"/>

Notes _____

Item #	Qty	Component	Model #											
2A	_____	Conveyor	PT	<input type="checkbox"/>	<input type="checkbox"/>	<input type="checkbox"/>	<input type="checkbox"/>	<input type="checkbox"/>	<input type="checkbox"/>	<input type="checkbox"/>	<input type="checkbox"/>	<input type="checkbox"/>	<input type="checkbox"/>	<input type="checkbox"/>
2B	_____	Drive Package	PTD	<input type="checkbox"/>	<input type="checkbox"/>	<input type="checkbox"/>	<input type="checkbox"/>	<input type="checkbox"/>	<input type="checkbox"/>	<input type="checkbox"/>	<input type="checkbox"/>	<input type="checkbox"/>	<input type="checkbox"/>	<input type="checkbox"/>
2C	_____	Gear Motor	PTG	<input type="checkbox"/>	<input type="checkbox"/>	<input type="checkbox"/>	<input type="checkbox"/>	<input type="checkbox"/>	<input type="checkbox"/>	<input type="checkbox"/>	<input type="checkbox"/>	<input type="checkbox"/>	<input type="checkbox"/>	<input type="checkbox"/>
2D	_____	Control	PTE	<input type="checkbox"/>	<input type="checkbox"/>	<input type="checkbox"/>	<input type="checkbox"/>	<input type="checkbox"/>	<input type="checkbox"/>	<input type="checkbox"/>	<input type="checkbox"/>	<input type="checkbox"/>	<input type="checkbox"/>	<input type="checkbox"/>
2E	_____	Support	PTS	<input type="checkbox"/>	<input type="checkbox"/>	<input type="checkbox"/>	<input type="checkbox"/>	<input type="checkbox"/>	<input type="checkbox"/>	<input type="checkbox"/>	<input type="checkbox"/>	<input type="checkbox"/>	<input type="checkbox"/>	<input type="checkbox"/>
2F	_____	Option	PTZ	<input type="checkbox"/>	<input type="checkbox"/>	<input type="checkbox"/>	<input type="checkbox"/>	<input type="checkbox"/>	<input type="checkbox"/>	<input type="checkbox"/>	<input type="checkbox"/>	<input type="checkbox"/>	<input type="checkbox"/>	<input type="checkbox"/>
2G	_____	Option	PTZ	<input type="checkbox"/>	<input type="checkbox"/>	<input type="checkbox"/>	<input type="checkbox"/>	<input type="checkbox"/>	<input type="checkbox"/>	<input type="checkbox"/>	<input type="checkbox"/>	<input type="checkbox"/>	<input type="checkbox"/>	<input type="checkbox"/>
2H	_____	Option	PTZ	<input type="checkbox"/>	<input type="checkbox"/>	<input type="checkbox"/>	<input type="checkbox"/>	<input type="checkbox"/>	<input type="checkbox"/>	<input type="checkbox"/>	<input type="checkbox"/>	<input type="checkbox"/>	<input type="checkbox"/>	<input type="checkbox"/>

Notes _____

