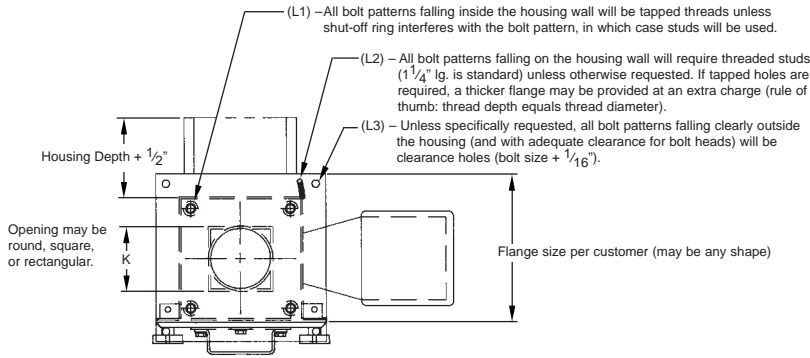
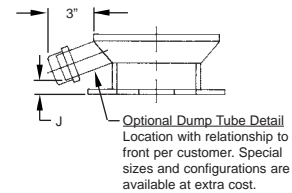
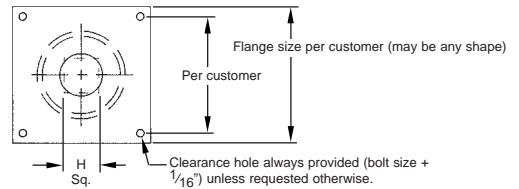
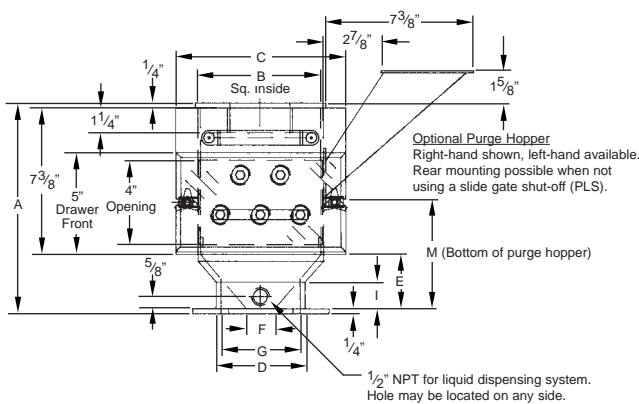


Selection Guide for Standard and Self-Cleaning FF Series



Model	FF4400PL/PLS	FF4600PL/PLS	FF4800PL/PLS	FF4100PL/PLS*
A	10 ¹ / ₂	10 ⁵ / ₈	10 ⁷ / ₈	Varies
B	4 X 4	6 X 6	8 X 8	10 X 10
C	6 ¹ / ₂	8 ¹ / ₂	10 ¹ / ₂	12 ¹ / ₂
D	2 ⁵ / ₈	4 ³ / ₈	6 ³ / ₈	Varies
E	2 ⁵ / ₈	2 ³ / ₄	3	Varies
F Min. Rnd. Opg.	7/ ₈	1 ³ / ₄	3 ¹ / ₈	Varies
G Max. Rnd. Opg.	2 ¹ / ₈	3 ⁷ / ₈	6	Varies
H Max. Sq. Opg.	1 ¹ / ₂	2 ³ / ₄	4 ¹ / ₄	Varies
I	11 ¹¹ / ₃₂	15 ¹ / ₁₆	11 ¹¹ / ₃₂	Varies
J	3/ ₈	7/ ₁₆	3/ ₄	Varies
K Max. Opg.	3	5	6 ³ / ₄	8 ³ / ₄
L1 L2 L3	Per Customer Specifications			
M	6 ³ / ₈	6 ¹ / ₂	6 ³ / ₄	Varies

* Model FF4100PL/PLS is available with welded transition only (no casting).



Ordering Information

Bunting part numbers denote models and features. Drawer Magnet Part Numbers have three parts. The initial two letters designate the model type. The numerical digits indicate the size of the square top plate. The trailing letters specify Drawer Magnet options.

For example: **Part FFS4600-PLS-CR**
 This part number describes an FF Series Drawer Magnet with a 6" Square Stainless Steel Housing equipped with a Slide Gate and Ceramic Magnet-Powered Cartridges.

FF Series Part Number Explanation

Model/Type	Size	Options	Magnetic Material
FF = Mild Steel Housing	4400 = 4" Square	PL = Without Slide Gate	CR = Ceramic
FFS = Stainless Steel Housing	4600 = 6" Square	PLS = With Slide Gate	AL = Alnico
	4800 = 8" Square		NPB = Neodymium Power-Balanced™ Rare-Earth material
	4100 = 10" Square		NHI = Neodymium High-Intensity Rare-Earth material for the most demanding applications

Low-Profile Part Number Explanation

Model/Type	Size	Options	Magnetic Material
LP = Mild Steel Housing	1600 = 6" Square	PL = Without Slide Gate	CR = Ceramic
LPS = Stainless Steel Housing	1800 = 8" Square	PLS = With Slide Gate	AL = Alnico
			NPB = Neodymium Power-Balanced™ Rare-Earth material
			NHI = Neodymium High-Intensity Rare-Earth material for the most demanding applications

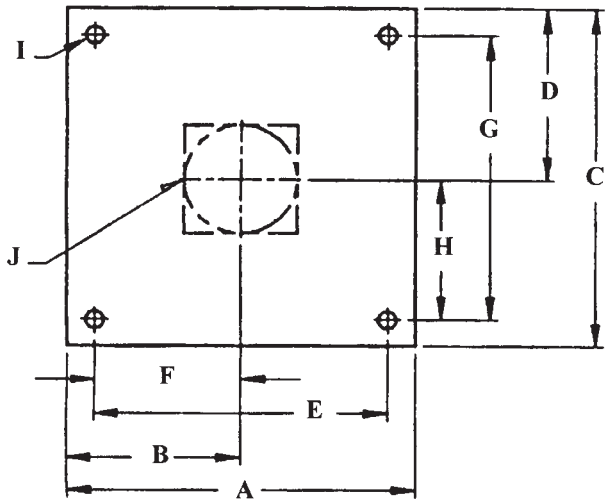
Please specify purge hopper, dump tube, and liquid dispensing port options and locations when ordering.

QUANTITY	BUNTING MODEL NO.	DESCRIPTION	UNIT PRICE	AMOUNT

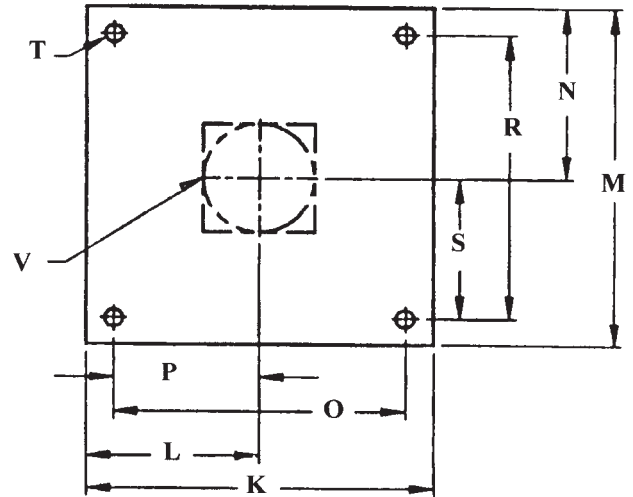
OPTIONAL EQUIPMENT

- SLIDE GATE SHUT-OFF WITH DISCHARGE DUMP TUBE REAR OTHER _____
 WITH PURGE HOPPER TAPPED HOLE FOR LIQUID DISPENSING SYSTEM
 R.H. SIDE L.H. SIDE
 OTHER _____

INFORMATION REQUIRED FOR ORDERING OR QUOTATION REQUEST



**BOTTOM FLANGE
OPERATOR SIDE (FRONT)**



**TOP FLANGE
OPERATOR SIDE (FRONT)**

- A _____
 B _____
 C _____
 D _____
 E _____
 F _____
 G _____
 H _____
 I _____ (Bolt Size Used)
 J—Opening
 ROUND _____
 SQUARE _____
 RECTANGLE:
 FRONT TO BACK _____
 SIDE TO SIDE _____

- K _____
 L _____
 M _____
 N _____
 O _____
 P _____
 R _____

- S _____
 * T _____
 (Thread Size Used) Threaded Holes
 Studs
 V—Opening
 ROUND _____
 SQUARE _____
 RECTANGLE:
 FRONT TO BACK _____
 SIDE TO SIDE _____

MAKE OF PRESS _____ SERIAL NO. _____
 MODEL _____ SCREW SIZE _____ OUNCE _____
 MAKE OF HOPPER _____ HOPPER CAPACITY _____ LBS.

* Studs will be required if bolt pattern falls on housing body.